

# ELEMENTS

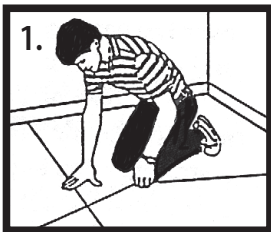
## TILES

### PREPARATION

Ensure that the floor is even, clean and dry. Concrete and newly sanded floors should be sealed with an appropriate floor sealer.

Before commencing to lay the tiles, it is advisable to spend a few minutes planning the floor layout.

### LAYING THE TILES



1. Draw straight lines at right angles across the centre of the room. Snapping chalked string stretched between nails is an easy method.



2. Check the distance from the marked centre to the walls to ensure that you will have a reasonable size cut in each wall. If necessary, adjust the marked centre accordingly.



3. Stick down the first square at the junction of the chalk lines.

To apply the adhesive use a 3mm notched trowel, spreading it across an area

of approximately 2m. Ensure always that this 3mm notch is maintained either by replacing or sharpening the trowel. The spread rate for the adhesive is as follows:

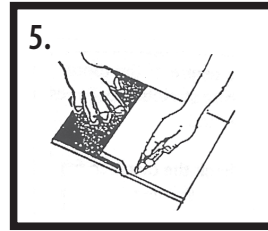
3-4m<sup>2</sup> per litre, ie; 1 x 20 litre maximum 80m<sup>2</sup> meterage.

Ensure that there is not too much adhesive in any one spot so as to avoid the adhesive showing through the surface. If this does occur, immediately sponge with water.



4. Stick down the first row of squares working to one of the walls. Stick the squares firmly into position.

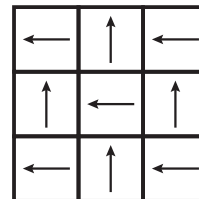
For commercial floors it is recommended that the floor be rolled with a heavy flooring trade roller.



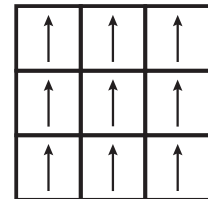
5. Continue laying the first row as a guide, completing a quarter of the room at a time. To cut squares in along walls, place square to be cut under the next square nearest the wall and use that square as your cutting guide.

### AUTEX CARPET TILES MAY BE LAID EITHER:

#### Checkerboard style



#### All in one direction



AUTEX



Autex Industries Ltd  
702 - 718 Rosebank Rd  
Private Bag 19988,  
Avondale 1746, Auckland  
New Zealand  
Phone +64 9 828 9179  
Fax +64 9 828 5810  
Freephone 0800 428 839  
www.autex.co.nz